

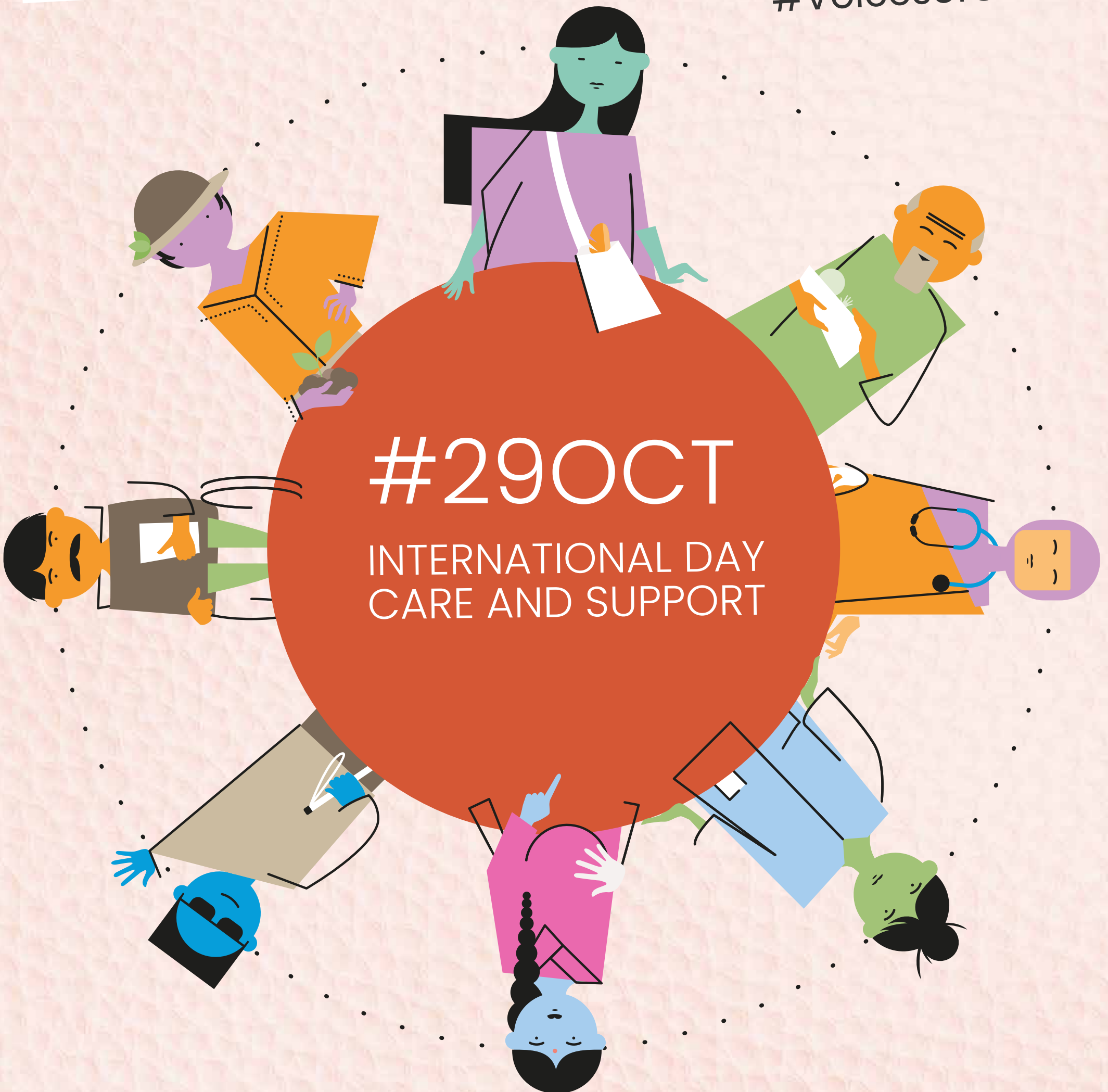
New publication

TOWARDS COMPREHENSIVE CARE SYSTEMS FOR GENDER EQUITY IN LATIN AMERICA: EVIDENCE AND LESSONS FROM THE COLLABORATIVE RESEARCH-ACTION FUND

#VoicesofCare

#29OCT

INTERNATIONAL DAY
CARE AND SUPPORT



IN LATIN AMERICA:

*ECLAC 2023.

Women devote between

12%
and 24%

of their time to unpaid work,

compared to

5% to 9%
for men*

Women aged 15 and older spend between

22 and 43

hours per week on unpaid domestic and care work

while men of the same age spend between

7 and 20
hours*

However, the value of unpaid carework is estimated to range between

15,9% and 27,6%

of the regional GDP, a figure that reveals its economic weight but also its invisibility in national accounts*.



Ford Foundation

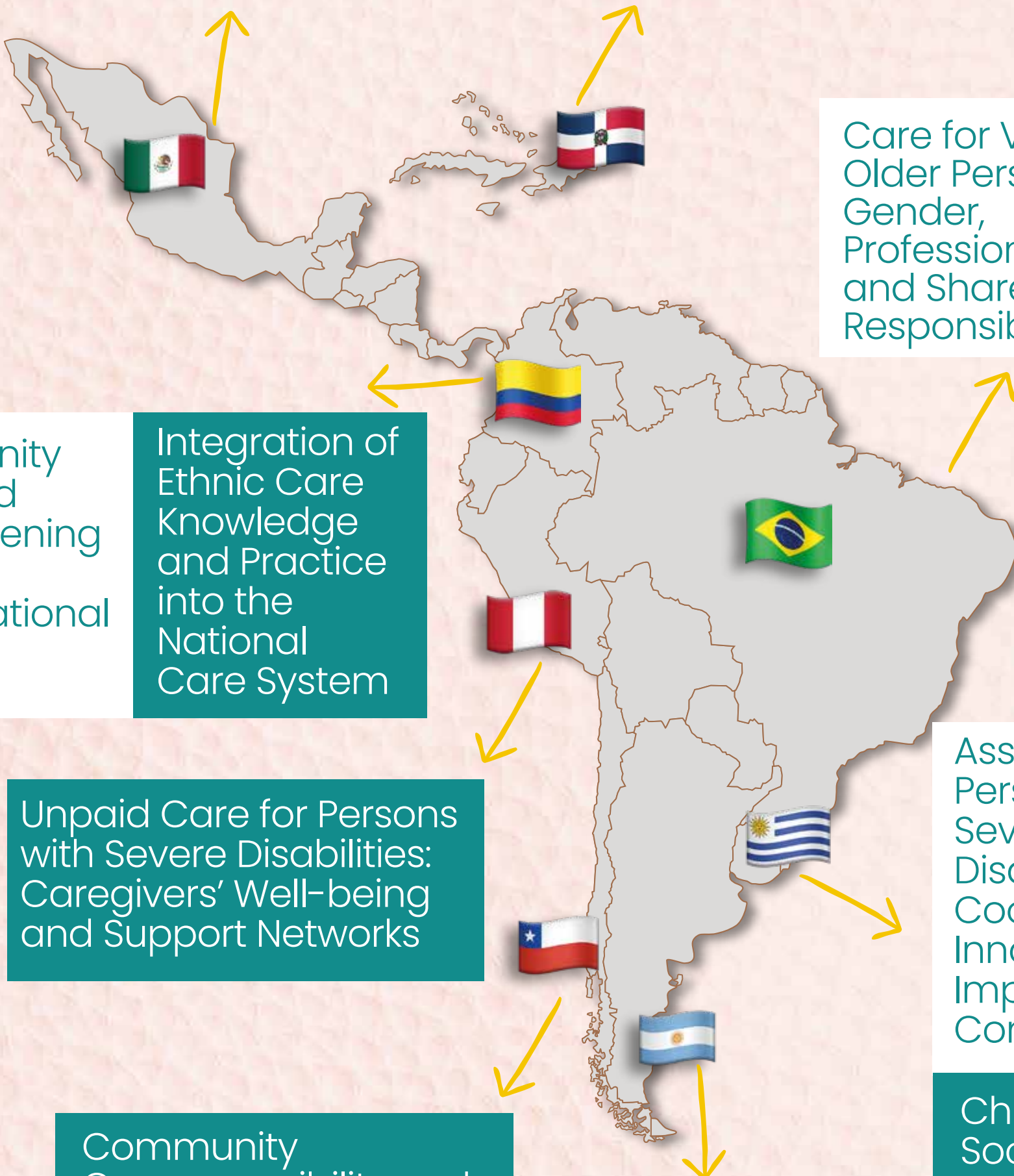
We have been leading a regional platform for innovation and policy engagement, which links local experiences with national agendas and international commitments, towards fairer, more sustainable care systems with a gender focus.

THEMATIC AREAS OF THE COLLABORATIVE ACTION-RESEARCH FUND

Autonomy and Well-being of Caregivers through Territorial Care Environments

Formalization of Care Work and Labor Rights for Community Caregivers

Care for Vulnerable Older Persons: Gender, Professionalization, and Shared Responsibility



Community Care and Strengthening of Local Organizational Network

Integration of Ethnic Care Knowledge and Practice into the National Care System

Unpaid Care for Persons with Severe Disabilities: Caregivers' Well-being and Support Networks

Assistance for Persons with Severe Disabilities: Cooperative Innovation and Improved Conditions

Community Co-responsibility and Territorial Belonging in Community Care Centers

Redistribution of Care and Strengthening of Local Capacities with a Gender Perspective

Childcare as a Social Investment: Childhood, Women's Autonomy, and Employment Quality

Fund 1

Fund 2

WHAT WE ARE LEARNING?

There is no single model of care, but shared principles that guide the building of fairer and more sustainable systems.



Diversity of Models
and Territorial
Relevance



Centrality of
Community
Care



Feminist
Innovations



Multi-Stakeholder
Alliances



The relevance of
the sustainability
and replicability
of changes



DOWNLOAD

Towards Comprehensive Care Systems for Gender Equity in Latin America: Evidence and Lessons from the Collaborative Research-Action Fund



#29OCT

INTERNATIONAL DAY
CARE AND SUPPORT